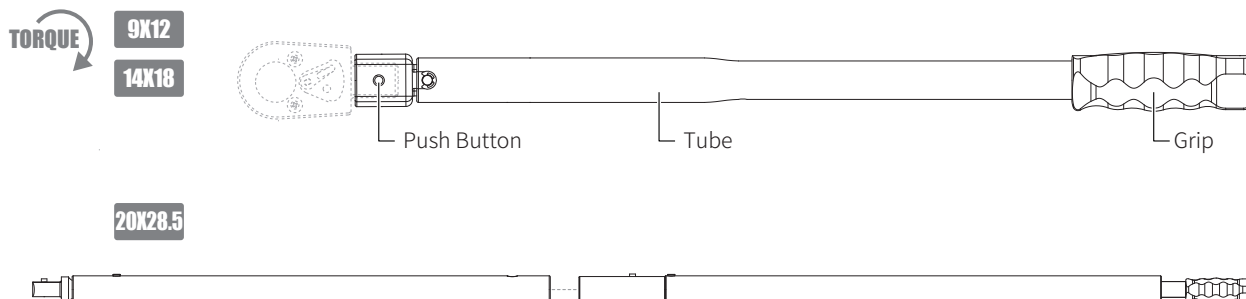


# Interchangeable Head Torque Handle Pre-Set Type OPERATION MANUAL

Models covered

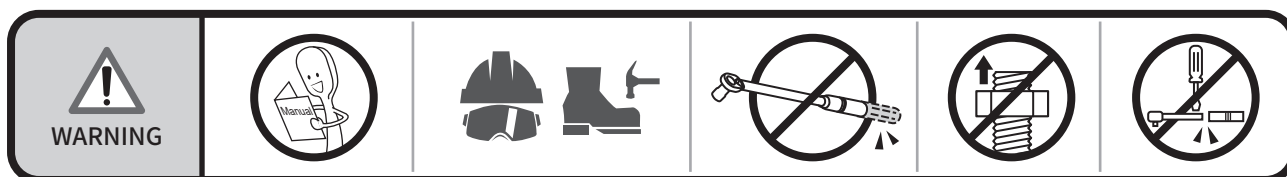
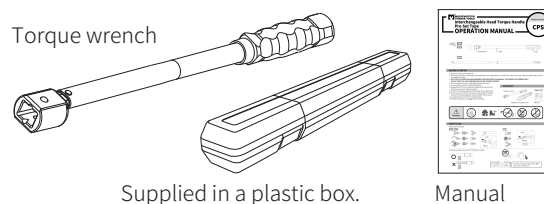
**CPS**



## BEFORE STARTING

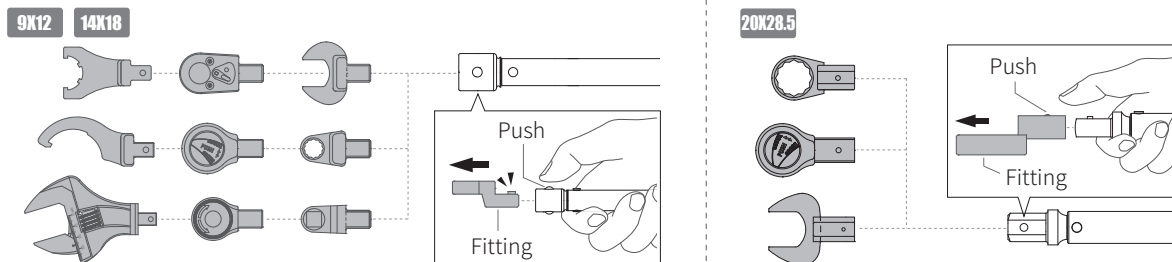
1. Study this instruction before use.
2. This torque wrench as calibrated and tested before leaving the factory is certified to meet the current standard specification and has an accuracy of  $\pm 4\%$ .
3. **THIS TOOL IS A PRECISION MEASUREMENT AND DESIGNED FOR MANUAL TIGHTENING FASTENERS ONLY. DO NOT USE IT AS A NUT BREAKER OR FOR ANY OTHER PURPOSE.**
4. Over torque will cause tool damage and personal injury.
5. Do not use this tool near rotating machinery.
6. Disassemble this tool or make any adjustments will result of losing accuracy and void the warranty.
7. Do not continuously apply force after hear click or feel shock.
8. Do not use any format of extension on the handle of the tool.  
This will not only damage the tool, also affect the accuracy.
9. Use special care at minimum torque setting.
10. Please wear gloves and goggles when working.

## CONTENTS

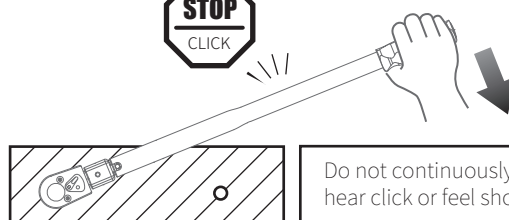
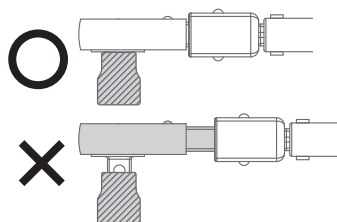


## HOW TO USE

Fitting (Not included)



Insert square drive securely to the fitting or socket.



## MAINTENANCE AND STORAGE

1. If this tool has not been used for a period of time, it shall be preloaded several times to allow internal lubricant to recoat.
2. Clean this tool by wiping with a clean cloth after operation and storage in a dry environment.  
Do not dip any type of liquid in this tool. This may damage the internal of this tool.
3. This tool should be recalibrated a period of 12 months, or 5,000 cycles, whichever occurs first.  
To contact with local vendor, an authorized repair center for supporting.



## TORQUE CONVERSION FACTORS

Units to be converted	Corresponding unit								
	=mN-m	=cN-m	=N-m	=ozf-in	=lbf-in	=lbf-ft	=gf-cm	=kgf-cm (kp-cm)	=kgf-m (kp-m)
1 mN-m	1	0.1	0.001	0.142	0.009	0.0007	10.2	0.01	0.0001
1 cN-m	10	1	0.01	1.416	0.088	0.007	102	0.102	0.001
1 N-m	1000	100	1	141.6	8.851	0.738	10197	10.2	0.102
1 ozf-in	7.062	0.706	0.007	1	0.0625	0.005	72	0.072	0.0007
1 lbf-in	113	11.3	0.113	16	1	0.083	1152.1	1.152	0.0115
1 lbf-ft	1356	135.6	1.356	192	12	1	13826	13.83	0.138
1 gf-cm	0.098	0.01	0.0001	0.014	0.0009	0.00007	1	0.001	0.00001
1 kgf-cm(kp-cm)	98.07	9.807	0.098	13.89	0.868	0.072	1000	1	0.01
1 kgf-m(kp-m)	9807	980.7	0.9807	1389	86.8	0.723	100000	100	1

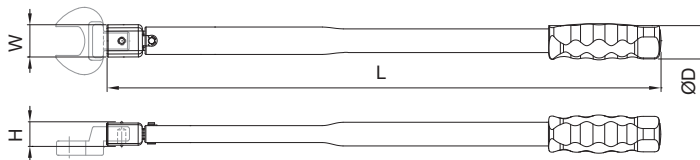
Conversion-formula :

Units to be converted × Factor = Corresponding unit

Example : Convert 5 lbf-ft into cN-m

Solution : 5 × 135.6 = 678 cN-m

## SPECIFICATION



### Metric

ITEM NO.		Range	W	H	L	ØD	KG
CPS-12N	9x12	2-12 Nm	23.8	16.7	188	27.4	0.22
CPS-50N	9x12	10-50 Nm	24.0	16.2	290	37.3	0.51
CPS-50NS	14x18	10-50 Nm	24.0	16.2	290	37.3	0.51
CPS-100N	9x12	20-100 Nm	23.9	16.2	420	37.3	0.69
CPS-100NS	14x18	20-100 Nm	23.9	16.2	420	37.3	0.69
CPS-200N	14x18	50-200 Nm	32.1	23.2	500	37.3	1.25
CPS-300N	14x18	80-300 Nm	32.3	24.7	580	37.3	3.55
CPS-500N	14x18	100-500 Nm	33.1	27.0	738	37.3	5.80
ITEM NO.		Range	W	H	L	ØD	KG
CPS-800N	20x28.5	150-800 Nm	28.0	24.0	961	37.3	6.30
CPS-1200N	20x28.5	240-1200 Nm	28.0	24.0	1381	37.3	8.80
CPS-1500N	20x28.5	300-1500 Nm	28.0	24.0	1787	37.3	11.45

### SAE

Accuracy: ± 4%

ITEM NO.		Range	W	H	L	ØD	KG
CPS-120i	9x12	20-120 in.lb	23.8	16.7	188	20.70	0.22
CPS-40F	9x12	4-40 ft.lb	24.0	16.2	290	30.80	0.51
CPS-40FS	14x18	4-40 ft.lb	24.0	16.2	290	30.80	0.51
CPS-80F	9x12	10-80 ft.lb	23.9	16.2	420	30.80	0.69
CPS-80FS	14x18	10-80 ft.lb	23.9	16.2	420	30.80	0.69
CPS-150F	14x18	40-150 ft.lb	32.1	23.2	500	34.00	1.25
CPS-230F	14x18	60-230 ft.lb	32.3	24.7	580	40.00	3.55
CPS-400F	14x18	80-400 ft.lb	33.1	27.0	738	37.85	5.80
ITEM NO.		Range	W	H	L	ØD	KG
CPS-600F	20x28.5	120-600 ft.lb	28.0	24.0	961	37.20	6.30
CPS-800F	20x28.5	150-800 ft.lb	28.0	24.0	1381	37.40	8.80
CPS-1000F	20x28.5	200-1000 ft.lb	28.0	24.0	1787	37.40	11.45

Unit: mm

**Edition 01**

MAY 2020



**MATATAKITOYO**  
**TORQUE TOOLS**  
E-mail: matatakitoyo@gmail.com  
www.matatakitoyo.com

Manufacturer

**MATATAKITOYO TOOL CO., LTD.**

No. 63, Ln. 493, Sec. 3, Zhongshan Rd., Tanzi Dist.,

Taichung City 42754, Taiwan

TEL : 886-4-2533 5893

Made in Taiwan